



TF 300XE - “Basic Plus” Light Robot Series

Middle-range mast robot lighting systems

Completely remote controlled lighting system for TF 300XE series of masts.

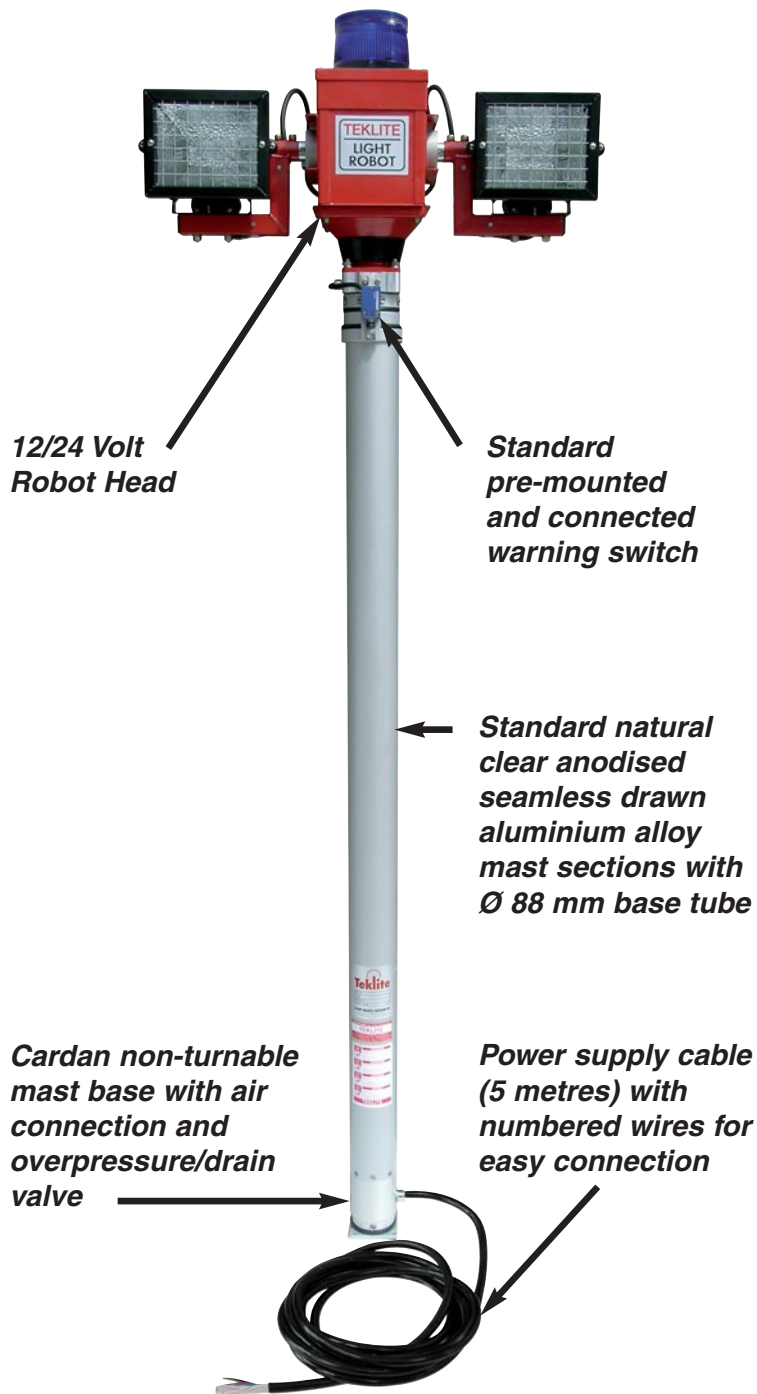
Light Robot’s features

- *Compact construction*
- *Easy to install*
- *Simple to use*
- *Choice of different lamp types*



MOBILE, PORTABLE & EMERGENCY LIGHTING

Amazingly easy to operate !




Functions

- To extend the mast
- To switch the lighting left (lights 1) and right (lights 2) "on" and "off"
- Beacon switch
- To turn and tilt the lamps in any direction
- Automatic return to the retracted position (also when releasing the handbrake)



Here are the features that make fitting and operating this system so easy:

1. Electric system powered from the 12/24 volt vehicle battery and controlled by cable remote control.
2. It is possible to operate the mast robot lighting system with a single or double cable remote control.
3. When the operation is over, a simple push on the button "  " turns the lamps to the stowage position and retracts the mast. This cycle may also be automatically started by the release of the vehicle handbrake.
4. Air-operated telescopic mast based on proven TF 300 series.
5. Robot Lighting Head tilts maximum 315° downwards in only one direction starting from zero position and turns 360° to the right in only one direction starting from zero position, at the touch of a button.
6. Lamps can be either 12/24 volt or 110/230 volt if there is a generator on board.
7. All Mast Robot Lighting Systems are also available with deadman function. Put "DF" after the **control/junction unit cat. no.** for ordering purposes.

Technical specifications Light Robot Series with TF 300XE masts

MAST ROBOT LIGHTING SYSTEM SPEC.

TF 300XE mast	: Anodised aluminium alloy sections (Ø 88 mm base tube)
Warning switch	: Standard pre-mounted and connected
TF 300XE "Basic Plus" Robot Head	: 12 or 24 volt
Lamp choice	: HPS, MH, Halogen, Xenophot, Xenon or SMD-LED
Remote control	: Push button model
Control/Junction unit "Basic Plus"	: 12 or 24 volt
Air supply	: Compressor, Air Pressure Regulator or Air Pressure Valve Kit
Max. air pressure	: 1.8 bar
Options	: FireCAN & CANopen Interfaces available on request

PERFORMANCE (to tilt and turn lamps)

Turning speed	Time
Horizontal turning speed at 180°	15 sec.
Vertical turning speed at 90°	5 sec.

TF 300XE MAST MODELS (Class II approved)

TF 300XE Series masts			
Model	Cat. No.	Retracted height	Extended height
3 section masts *			
TF 335XE/3*	25654	1560 mm	3510 mm
TF 340XE/3*	25655	1715 mm	3910 mm
TF 345XE/3*	25658	2040 mm	4725 mm
TF 350XE/3*	25656	2090 mm	4880 mm
TF 355XE/3*	25657	2215 mm	5220 mm
4 section masts			
TF 320XE/4	25678	965 mm	2140 mm
TF 335XE/4	25680	1350 mm	3450 mm
TF 340XE/4	25681	1480 mm	3950 mm
TF 346XE/4	25679	1640 mm	4600 mm
TF 350XE/4	25682	1740 mm	4990 mm
TF 355XE/4	25683	1900 mm	5450 mm

* All 3 section masts can be equipped with a S-STP/micro coax cable, suitable for video & audio applications.

LAMP UNIT CHOICE

Lamps can be supplied in 12, 24, 110 or 230 volt.



All robot heads are available with beacon (option). Put a "B" after the robot head cat. no. for ordering purposes.

* Lamp unit available with lamp protection guard (option). Put a "P" after the lamp unit cat. no. for ordering purposes.

Mast Lighting Robots are the most advanced, automatic lighting systems of the Teklite range.

They have features which make them suitable for medium or heavy size vehicles. One of the most attractive reasons to use a Light Robot is that it is installed with minimum work.

The telescopic mast of the mast robot lighting system can be fed by either :

1. the air compressor or
2. the air pressure tank of the vehicle.



Cat. No.	Model	Volt	Ampere	Lumens
25273	2 x 70 Watt HP Sodium*	12	12,5	13.000
25274	2 x 70 Watt HP Sodium*	24	7,0	13.000
25275	2 x 70 Watt Metal Halide*	12	13,0	10.000
25276	2 x 70 Watt Metal Halide*	24	7,4	10.000
27280	1 x 70 W HPS + 1 x 70 W MH*	12	12,8	11.500
27285	1 x 70 W HPS + 1 x 70 W MH*	24	7,2	11.500
25268	2 x 35 Watt Xenon	24	3,0	7.000
25277	2 x 100 Watt Xenophot*	12	16,7	7.200
25278	2 x 150 Watt Xenophot*	24	12,5	12.000
27300	2 x 300 Watt Xenophot*	24	25,0	24.000
25279	2 x 500 Watt Halogen*	230	4,4	19.000
27301	2 x 750 Watt Halogen*	230	6,5	33.000
25280	2 x 1000 Watt Halogen*	230	8,7	44.000
35911	2 x 55 Watt SMD-LED*	12	10,6	11.000
35916	2 x 55 Watt SMD-LED*	24	4,8	11.000
25269	4 x 35 Watt Xenon	24	5,9	14.000
25281	4 x 150 Watt Xenophot*	24	25,0	24.000
25282	4 x 500 Watt Halogen*	230	8,7	38.000
35921	4 x 55 Watt SMD-LED*	12	21,2	22.000
35926	4 x 55 Watt SMD-LED*	24	9,6	22.000
33425	6 x 35 Watt Xenon	24	9,0	21.000
33435	6 x 500 Watt Halogen*	230	13,0	57.000

Technical specifications

Light Robot Series with TF 300XE masts

MAST MOUNTING

These mast fittings are available for mounting the mast inside or outside the body of the vehicle.

External mounting



Upper Mounting Bracket

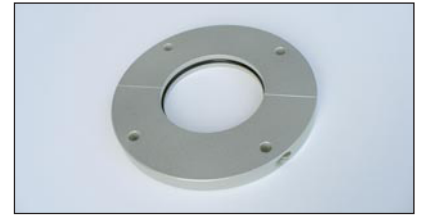
Cat. No. 16682/SG



Lower Mounting Bracket

Cat. No. 16686/SG

Internal mounting



Roof Bearing

Cat. No. 27623/SG

AIR SUPPLY FOR MAST EXTENSION

The air pressure for mast extension may be provided by a battery powered compressor or from the vehicle air pressure system.

Using the vehicle battery power



“TekAir” Compressor Model 40/50

Oil-free piston air compressor, completely maintenance-free.

Models with NO valve

Model 40/50, 12 volt Cat. No. 33652

Model 40/50, 24 volt Cat. No. 33653

Using the vehicle air pressure system



Air Pressure Regulator Unit

Combined unit consisting of valves, manometer, pressure switch and pressure regulator.

Models

APR Unit, 12 volt Cat. No. 25578

APR Unit, 24 volt Cat. No. 25579



Air Pressure Valve Kit

Kit consisting of loose valves, manometer and pressure regulator.

Models

APV Kit, 12 volt Cat. No. 27838

APV Kit, 24 volt Cat. No. 27839

MAST LIGHTING ROBOT HEAD WITH CONTROL/JUNCTION UNIT & REMOTE CONTROL



Robot Head “Basic Plus”

Model 12V Cat. No. 34020

Model 24V Cat. No. 34021



Control/Junction Unit “Basic Plus”

Model 12V Cat. No. 27719

Model 24V Cat. No. 27720



Cable Remote Control-LV

Cat. No. 27731

1,25 metre spiral cable + 10 metres linear cable



All details given in this publication are approximate and may be subject to change without notice.

Distributor :

CLARK MASTS SYSTEMS LTD

18/20 Ringwood Road,

Binstead, Isle of Wight, PO33 3NX, England

Tel : +44 (0)1983 563691 - Fax : +44 (0)1983 566643

E-mail : sales@clarkmasts.com

Website : www.teklite.com

ISO 9001:2008 CE

MOBILE, PORTABLE & EMERGENCY LIGHTING