





Clark Masts Systems has been designing and manufacturing telescopic and sectional mast systems for more than 50 years and has built up an extensive range of products that are used by civil and military authorities all around the world.

Design, development and testing are fundamental to the success of our organisation. This leaflet details our NT Series aluminium, telescopic masts that are produced to our exacting standards of quality.

The standard range is available from 4 metres to 12 metres. Customised solutions offering variations in retracted and extended heights are available at no extra cost. Clark Masts are used by all of the world's largest system integrators.



- NT Series Masts are made from 6082T6 aircraft grade seamless drawn aluminium tube.
- The base tube diameter is 3½" and can have a maximum of 5 sections.
- A full length machined keyway prevents relative rotation of the mast sections which allows the whole mast to be turned easily at the base if required.
- Rotating and non-rotating versions are available using optional bases.
- The NT mast can be vehicle or shelter mounted either externally or internally.
- Bearing surfaces are fitted with nylon and PTFE for smooth and effortless extension.
- Natural rubber seals are fitted for reliable operation in the most demanding of climatic conditions.
- All NT masts are qualified to MIL STD 810F.
- Heavy duty locking collar clamps for long term unattended deployment.
- Various top fittings to suit your requirement.
- Can be extended by using handpump or electric compressor.
- The plain collared version provides the lowest collar stack height available.



1. Powerful low-friction antenna clamp.
(Flange mount optional)
2. Rotating Guy Collar.
3. Large handles for easy section locking.
4. Easily replaced frangible key protecting mast keyway.
5. Totally enclosed telescopic section locking system.
6. Collet Ring.
(Locks section on full extension)
7. Adjustable bearing screws.
8. Optional water drain hole.
9. Machined keyway aligning telescoping sections.
10. High tensile corrosion resistant aluminium alloy tube
anodised finish.
11. Double Supertork notched locking sections on torsion
when the mast is fully extended.
12. Exclusive natural rubber low leak seals.
13. Teflon bearing rings on each piston.
14. Location of optional mast extension warning switch.
(Factory fitted only)
15. Combined pressure relied and condensate drain
valve.
16. Air inlet.



Alternative Collars and Bases available for varied application and Field or Vehicle Installation.



Plain Collars



Locking Collars



Fixed Base



Rotatable Base



Field Base

Range Table

NT Series

NT Telescopic Masts offer versatile lightweight solutions for lifting headloads from 5 kg to 30 kg.
Choose between a wide range of models to suit your application.

Turnable and non turnable models are available.

Plain Collar - Non Turnable

Catalogue Number	Model Number	Extended Height	Retracted Height	Maximum Headload
NT 4 Section Model Range				
49694	NT40-4-NP	4.00 m	1.39 m	30.00 kg
49696	NT60-4-NP	6.00 m	1.84 m	25.00 kg
48365	NT80-4-NP	8.00 m	2.37 m	20.00 kg

NT 5 Section Model Range				
49698	NT60-5-NP	6.00 m	1.65 m	20.00 kg
44968	NT90-5-NP	9.00 m	2.31 m	15.00 kg
44998	NT100-5-NP	10.00 m	2.52 m	12.00 kg

Locking Collar - Non Turnable

Catalogue Number	Model Number	Extended Height	Retracted Height	Maximum Headload
NT 4 Section Model Range				
41404	NT40-4-NC	4.00 m	1.45 m	30.00 kg
41405	NT60-4-NC	6.00 m	1.90 m	25.00 kg
41406	NT80-4-NC	8.00 m	2.43 m	20.00 kg

NT 5 Section Model Range				
41407	NT60-5-NC	6.00 m	1.73 m	20.00 kg
41408	NT90-5-NC	9.00 m	2.39 m	15.00 kg
41409	NT100-5-NC	10.00 m	2.60 m	12.00 kg

Plain Collar - Turnable

Catalogue Number	Model Number	Extended Height	Retracted Height	Maximum Headload
NT 4 Section Model Range				
49695	NT40-4-TP	4.05 m	1.45 m	30.00 kg
45994	NT60-4-TP	6.05 m	1.89 m	25.00 kg
49697	NT80-4-TP	8.05 m	2.43 m	20.00 kg

NT 5 Section Model Range				
49699	NT60-5-TP	6.05 m	1.71 m	20.00 kg
44700	NT90-5-TP	9.05 m	2.37 m	15.00 kg
44701	NT100-5-TP	10.05 m	2.58 m	12.00 kg

Locking Collar - Turnable

Catalogue Number	Model Number	Extended Height	Retracted Height	Maximum Headload
NT 4 Section Model Range				
41410	NT40-4-TC	4.05 m	1.50 m	30.00 kg
41411	NT60-4-TC	6.05 m	1.95 m	25.00 kg
41412	NT80-4-TC	8.05 m	2.48 m	20.00 kg

NT 5 Section Model Range				
41413	NT60-5-TC	6.05 m	1.78 m	20.00 kg
41414	NT90-5-TC	9.05 m	2.44 m	15.00 kg
41415	NT100-5-TC	10.05 m	2.65 m	12.00 kg

Material Specifications

Mast Sections:

Seamless drawn aluminium 10 SWG
ENAW6082T6.

Standard Paint Colour:

White gloss (RAL 9010). All RAL colours are available on request.

Canvas Covers and Bags:

Cloth-coated polyurethane, Black or Green

Castings:

Aluminium alloy, gravity die cast using ingots to BS 1490 grade LM6.

Finishes:

Mast sections are anodised and dyed to a choice of colours. Steel fittings are zinc plated and passivated.

Operating Temperatures:

-40°C to +55°C.

Air Pressure:

Maximum operating air pressure 30 psi 2 Bar.

All NT masts have been tested to MIL STD 810F standards.

Website: www.clarkmasts.com
E-mail: sales@clarkmasts.com
Telephone: +44 (0)1983 563691/567090



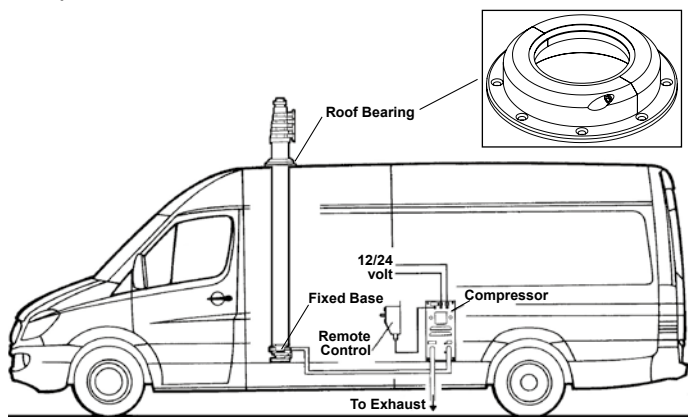
Configurations and Mountings

NT Series

Internally Mounted NT Mast

This is normally the most popular way of mounting a Clark Mast on a vehicle, the internally mounted mast uses the weatherproof roof bearing to adapt the vehicle roof and allows the mast to be rotated through 360 degrees when fitted with the rotatable base.

The roof bearing consists of a whole outer ring that is bolted to the vehicle roof skin and bearing halves that are clamped around the base tube and then positioned over the fixed ring so any rain or condensation will run off. This roof bearing is fitted with PTFE rings and a weatherproof sealing ring. Roof bearings are supplied in a painted finish in the same colour as the mast.



Externally Mounted NT Mast

NT masts can be mounted on a vertical surface of a van or shelter using upper and lower mounting brackets.

The mast can be rotated through 360 degrees and locked in position by clamping the rotatable base when required.



Field Mounted NT Mast

NT Series masts can also be field mounted on a folded tripod stand or as a DAF NT using adjustable field legs that permanently attach to the mast.



Tripod Mounted

Shown on the left, the NT mast is mounted on a MK6 stainless steel folding tripod stand, which is easily transported when folded (pictured below).



DAF NT Series

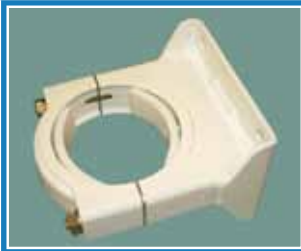
When fitted with integral, adjustable, steel telescopic field legs, as shown on the right, the mast is known as the DAF NT Series.

Please see our separate leaflet for further information.



Accessories

NT Series



UPPER MOUNTING BRACKET

Used to mount the NT mast externally on a vehicle, wall or shelter. Allows the mast to rotate 360° and is fitted with PTFE bearing pads.

Cat. No. 41423 Weight: 1.29 kg



LOWER MOUNTING BRACKET

Used for externally mounting a NT Mast on a vertical surface of a vehicle.

Cat. No. 14424 Weight: 0.98 kg



ROOF BEARING

Used when fitting a NT Mast through the roof of a vehicle. Allows 360° rotation and is fitted with PTFE bearings and a weatherproof ring.

Cat. No. 41425 Weight: 0.56 kg



3 1/2" SADDLE CLAMP

Normally used in pairs the saddle clamps provide a mounting for installations where frequent mast removal is required.

Cat. No. 25961 Weight: 0.75 kg



SIDE HANDLE

This solid aluminium handle is fitted to the base tube of the NT Mast when rotation is required.

Cat. No. 41426 Weight: 0.32 kg



3.5" WALL MOUNTING BRACKET

Generally for use where masts are to be externally vehicle mounted, shelter mounted or wall mounted.

Cat. No. 25962
Weight: 0.30 kg



GRADUATED COLLAR

Used for NT Masts requiring bearing references.

Indexed 0 to 360°
Cat. No. 45255 Weight: 0.50 kg



ANTENNA TILTER

The user operates the antenna tilter from ground level by rope control. This tilter has a spigot diameter of 24 mm and an antenna clamp diameter of 24 mm.

Suitable for antennas up to 10 kg.

Cat. No. 30708 Weight: 1.58 kg



TOP GUY KIT

When operating in windy conditions this kit will allow you to stabilise the NT by securing it to the rotatable guy collar located on top of the mast.

Masts up to 6 Metres:
Cat. No. 41429
Masts over 6 metres:
Cat. No. 41430



TWIN CYLINDER FOOT PUMP

This external, lightweight and compact foot pump allows the user to extend the NT mast with ease.

Supplied with 3 metre hose and bayonet plug.

Cat. No. 40160



CANVAS COVER

The weather resistant material used to make this canvas provides protection when the mast is retracted and not in use.

Available in green and black.

Cat. No. 48902
Weight: 0.30 kg



MODEL 40 COMPRESSOR RANGE

With NC Valve
Cat. No. 33646 - 12v
33648 - 24v

With 'Deadman'
Cat. No. 33647 - 12v
33649 - 24v

Weight: 9.00 kg



REMOTE CONTROL HANDSET

For use with the Model 40 Compressors. Available in standard and 'deadman' switching versions. NC valve compatible.

12v
Cat. No. 25471
Weight: 0.50 kg

24v/110v/230v
Cat. No. 25472
Weight: 0.53 kg



NT HANDPUMP

This self-contained, lightweight aluminium handpump will extend any NT Mast quickly without any auxiliary power.

Supplied with 3 metres of hose and bayonet connector.

Cat. No. 41431
Weight: 2.00 kg



GLANDED TOP

Allows for fitting of smaller cameras or other electrical equipment with multiple waterproof cable glands. Glanded base also available.

EXTERNAL WARNING SWITCH

Externally mounted switch which signals to the warning circuit that the mast is fully extended

Dimensions: 100 mm x 100 mm



MK6 TRIPOD

This tripod is a portable mast base which folds into a compact unit. Each leg is adjustable for levelling. A Tripod Adaptor* is required to attach the mast to the tripod.

Masts up to 4 metres
Cat. No. 36585
Masts up to 6 metres
Cat. No. 36586
Masts up to 8 metres
Cat. No. 36587
Masts up to 10 metres
Cat. No. 36588

*Cat. No. 41428

Weight: 11.40 kg

Weight: 12.70 kg

Weight: 14.00 kg

Weight: 15.40 kg

Website: www.clarkmasts.com
E-mail: sales@clarkmasts.com
Telephone: +44 (0)1983 563691/567090





**CLARK
MASTSTM**

All details given in this publication are approximate and may be subject to change without notice.

Distributor:

Clark Masts is a division of Clark Masts Systems Ltd.

Doc. Ref. **NTSL-E-CMS-16.8.2018**

CLARK MASTS SYSTEMS LTD, 18-20 Ringwood Road, Binstead, Isle of Wight, PO33 3PA, UK
Tel: +44 (0)1983 563691/567090 Fax: +44 (0)1983 566643 E-mail: sales@clarkmasts.com
Website: www.clarkmasts.com

“World Headquarters Design and Manufacturing Centre”